

# MIL. SPEC SINGLE SHANK BALL

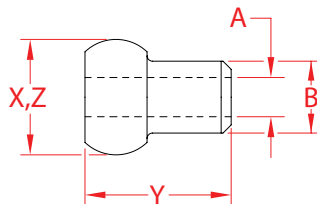
## STAINLESS STEEL



Made in  
USA



Precision  
Machined



ITEM	A (wire)	B BEFORE (swage)	B AFTER (swage)	BALL BEFORE (swage)	BALL AFTER (swage)	X (height)	Y (length)	Z (width)	WT (lb)	PACKAGING TYPE	EACH (qty)	INNER (qty)	CARTON (qty)	UPC
MS20664C2	1/16"	0.13"	0.11"	0.21"	0.19"	0.21"	0.27"	0.21"	0.01/100	POLYBAG	1	10	1,000	791506019190
MS20664C3	3/32"	0.17"	0.14"	0.28"	0.25"	0.28"	0.38"	0.28"	0.01/100	POLYBAG	1	10	1,000	791506019206
MS20664C4	1/8"	0.22"	0.19"	0.35"	0.32"	0.35"	0.50"	0.35"	0.6/100	POLYBAG	1	10	1,000	791506019213
MS20664C5	5/32"	0.26"	0.22"	0.42"	0.38"	0.42"	0.62"	0.42"	0.01	POLYBAG	1	10	1,000	791506019220
MS20664C6	3/16"	0.30"	0.26"	0.49"	0.44"	0.49"	0.73"	0.49"	0.01	POLYBAG	1	10	500	791506019237
MS20664C7	7/32"	0.35"	0.30"	0.56"	0.51"	0.56"	0.85"	0.56"	0.02	POLYBAG	1	10	500	791506019244
MS20664C8	1/4"	0.41"	0.35"	0.63"	0.57"	0.63"	0.96"	0.63"	0.03	POLYBAG	1	10	300	791506019251
MS20664C10	5/16"	0.48"	0.41"	0.77"	0.69"	0.77"	1.19"	0.77"	0.05	POLYBAG	1	5	200	791506019183

**NOTE:**  
**THESE FITTINGS MEET MIL SPEC #MS20664 AND HAVE MET ALL QUALITY AND TESTING REQUIREMENTS PER MIL-DTL-781 AND ARE APPROVED FOR LISTING IN QPL-781. MACHINE SWAGE ONLY.**  
**ALL DIMENSIONS ARE NOMINAL (+/- 3%) AND ARE SUBJECT TO CHANGE WITHOUT NOTICE.**